

UBIQUITI NANOSTATION (ANTENNA)

INDIRIZZO 192.168.1.20

USER: ubnt

PW: ubnt

The screenshot shows the Ubiquiti NanoStation2 L web interface accessed via a Windows Internet Explorer browser. The browser's address bar shows the URL `http://192.168.1.20/index.cgi`. The interface is titled "UBNT: [NanoStation2 L] - Main" and features a navigation menu with tabs: Main, Link Setup, Network, Advanced, Services, and System. The "Main" tab is selected, displaying various configuration fields and statistics.

Configuration Fields:

- Base Station SSID: `TrentinoNetwork`
- AP MAC: `00:17:63:02:04:29`
- Signal Strength: `-76 dBm`
- TX Rate: `24 Mbps`
- Frequency: `2472 MHz`
- Antenna: `Vertical`
- Security: `none`
- Transmit CCQ: `44.4%`
- Uptime: `01:27:37`
- LAN Cable: `ON`
- LAN MAC: `00:15:6D:D8:1F:18`
- WLAN MAC: `00:15:6D:D8:1F:18`
- Extra info: `- - -`
- RX Rate: `11 Mbps`
- Channel: `13`
- Noise Floor: `-94 dBm`
- ACK Timeout: `38`
- QoS Status: `No QoS`
- Date: `2009-02-14 17:24:35`
- Host Name: `UBNT`
- LAN IP Address: `192.168.1.20`
- WLAN IP Address: `10.28.22.188`
- Tools: `- - -`

LAN STATISTICS:

	Bytes	Packets	Errors
Received:	3808487	26350	0
Transmitted:	18168232	23459	0

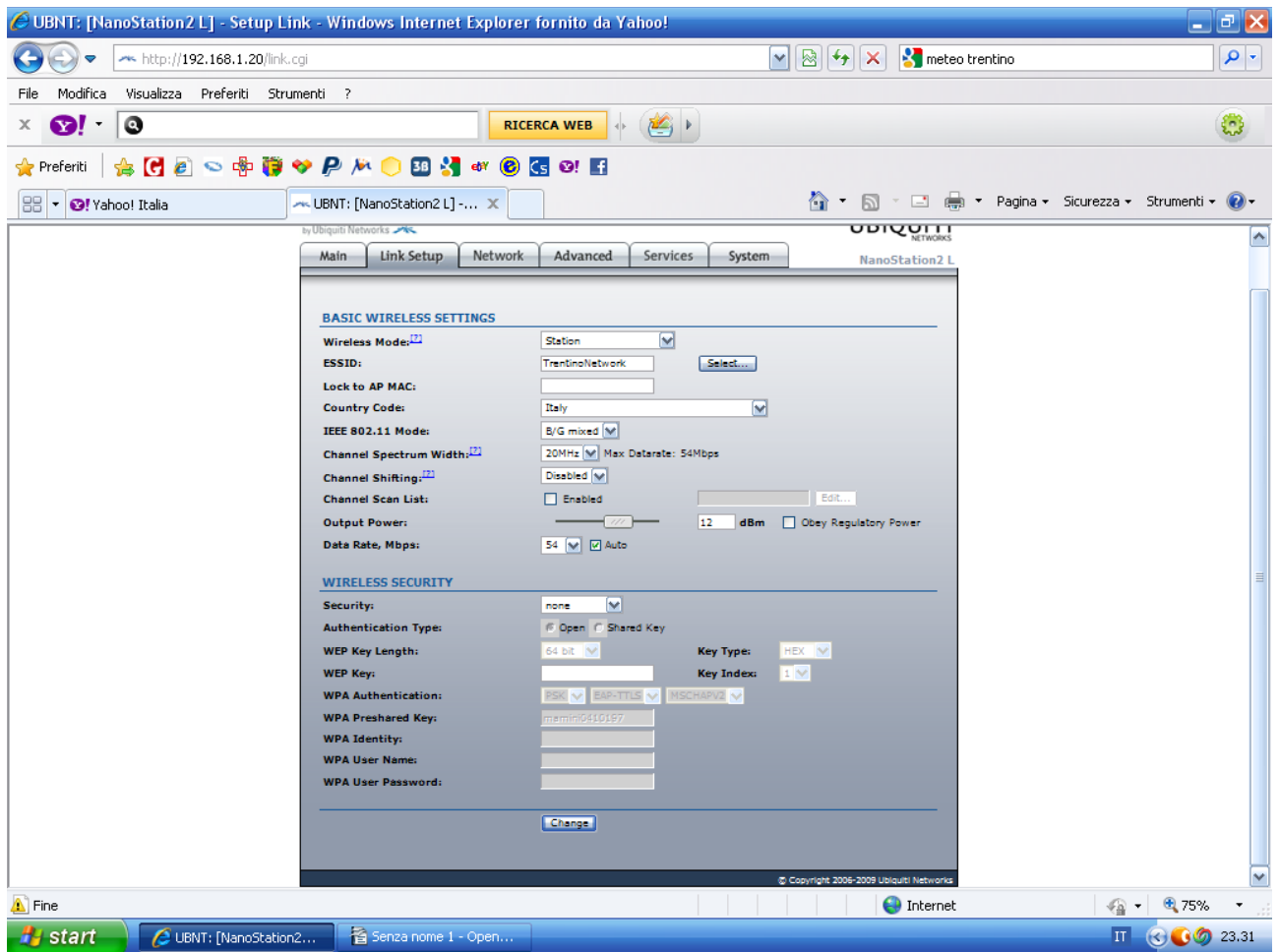
WLAN STATISTICS:

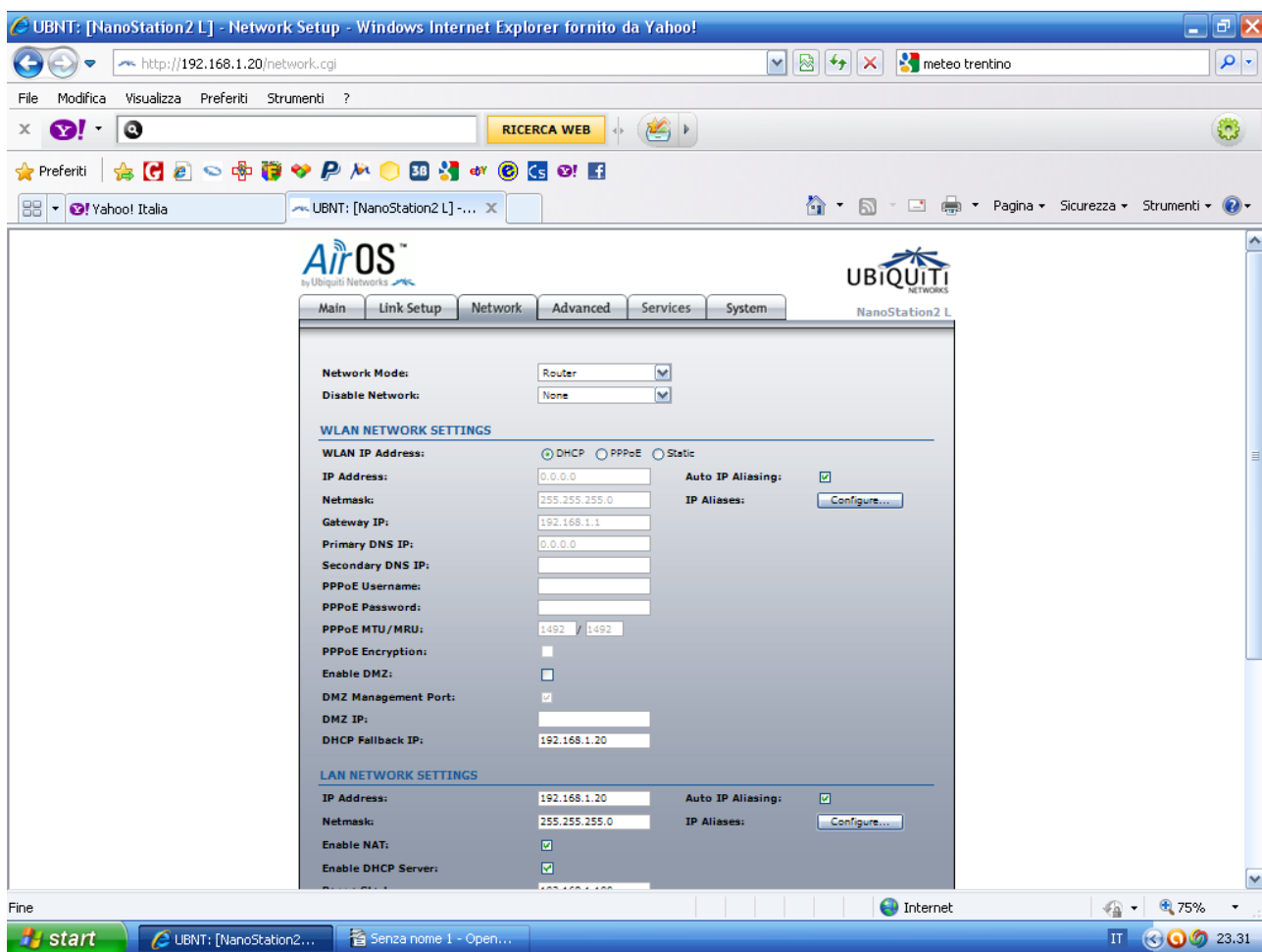
	Bytes	Packets	Errors
Received:	14941859	15155	0
Transmitted:	1706324	12423	0

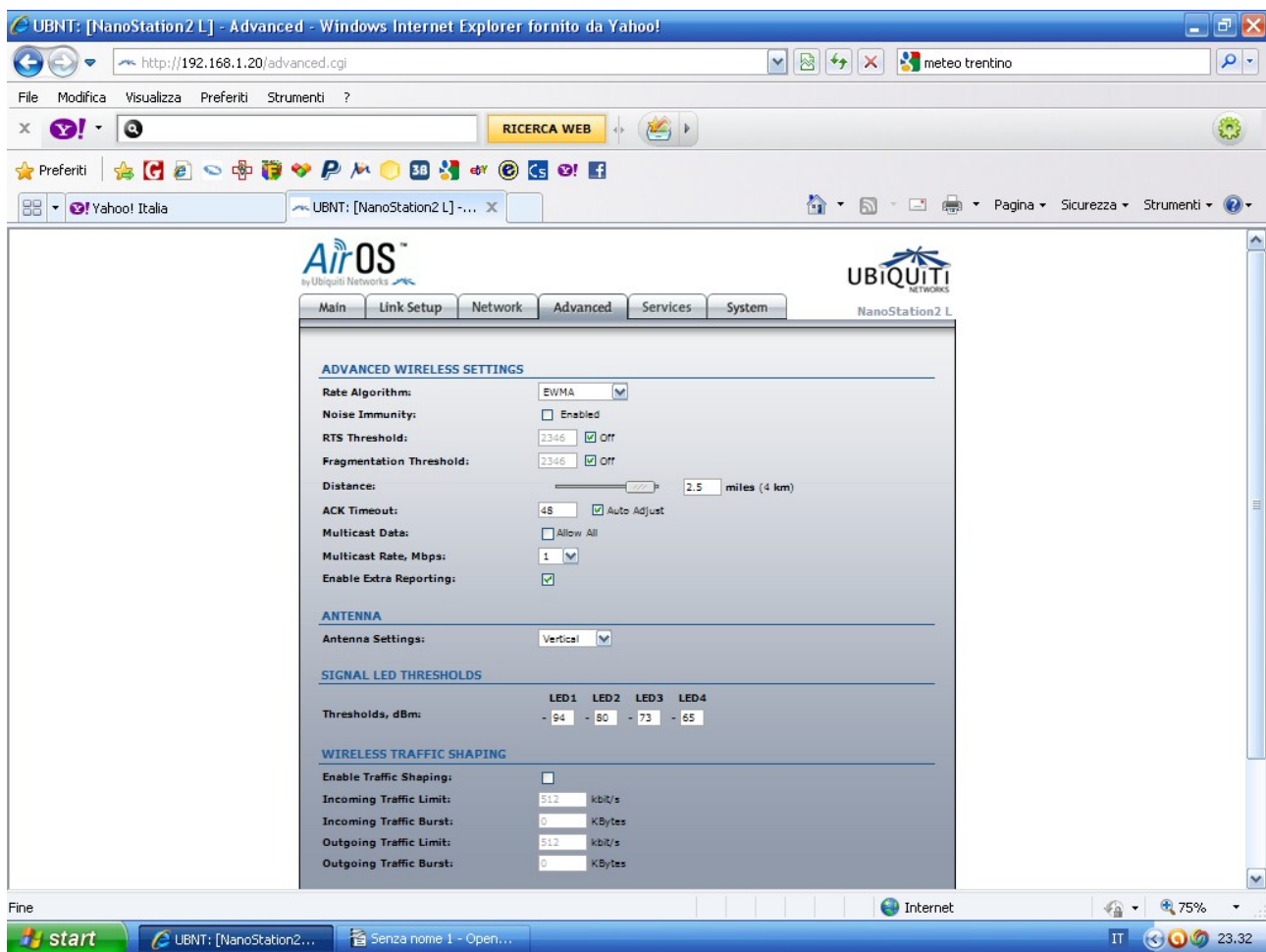
WLAN ERRORS:

Rx Invalid NWID:	0	Tx Excessive Retries:	0
Rx Invalid Crypt:	0	Missed Beacons:	0
Rx Invalid Frag:	0	Other errors:	0

The interface also includes a "Refresh" button at the bottom right of the statistics section. The browser's status bar at the bottom shows the "start" button, the active window "UBNT: [NanoStation2 L]...", and the system clock displaying "23:26".







ROUTER WIFI MEDIACOM
INDIRIZZO 192.168.1.1
USER: admin
PW: admin

Wireless-N Broadband Router - Windows Internet Explorer fornito da Yahoo!

http://192.168.1.1/main.html

File Modifica Visualizza Preferiti Strumenti ?

RICERCA WEB

Preferiti Yahoo! Italia Wireless-N Broadband Ro...

Pagina Sicurezza Strumenti

MEDACOM

WWW.MEDIACOMEUROPE.IT

- System Status
- Setup Wizard
- Advanced Settings
- WLAN Settings
 - Basic Settings
 - Security Settings
 - Advanced Settings
 - WPS Settings
 - WDS Settings
 - Access Control
 - Connection Status
- DHCP Server
- Virtual Server
- Traffic Control
- Security Settings
- Routing Settings
- System Tools
- Logout

Basic Settings

☒ Enable Wireless

Network Mode: 11b/g/n mixed mode

SSID: WIFI_RICKY

Broadcast(SSID): ☒ Enable ☐ Disable

BSSID: C8:3A:35:28:58:F8

Channel: 2437MHz (Channel 6)

Operating Mode: ☒ Mixed Mode ☐ Green Field

Channel BandWidth: ☐ 20 ☒ 20/40

Guard Interval: ☐ long ☒ Auto

MCS: Auto

Reverse Direction Grant(RDG): ☐ Disable ☒ Enable

Extension Channel: 2457MHz (Channel 10)

Aggregation MSDU (A-MSDU): ☒ Disable ☐ Enable

Apply Cancel

Help

In this section you can only configure the wireless parameters such as SSID and Channel.

SSID: the wireless network public name. The SSID is a must to enter

SSID Broadcast: When the wireless client will search out wireless network, they would detect the SSID broadcast around. If one is selected, the Router will broadcast its own SSID to all wireless hosts.

Channel: Select one from 1-13 channels or AutoSelect. As far as possible select the channel which is used less for preventing signal interference.

Extension Channel: It

start Wireless-N Broadban... Senza nome 1 - Open...

Internet 75% IT 23:33

Wireless-N Broadband Router - Windows Internet Explorer fornito da Yahoo!

http://192.168.1.1/main.html

File Modifica Visualizza Preferiti Strumenti ?

RICERCA WEB

Preferiti Yahoo! Italia Wireless-N Broadband Ro...

Pagina Sicurezza Strumenti

MEDACOM

WWW.MEDIACOMEUROPE.IT

- System Status
- Setup Wizard
- Advanced Settings
- WLAN Settings
 - Basic Settings
 - Security Settings
 - Advanced Settings
 - WPS Settings
 - WDS Settings
 - Access Control
 - Connection Status
- DHCP Server
- Virtual Server
- Traffic Control
- Security Settings
- Routing Settings
- System Tools
- Logout

Security Settings

SSID -- "WIFI_RICKY"

Security Mode

WPA Algorithms ☒ AES ☐ TKIP ☐ TKIP&AES

Pass Phrase

Key Renewal Interval second

Notice: Wireless Security Settings
802.11n only defines three standard encryption methods: Open-None (Disable), WPA- Personal-AES, WPA2-Personal-AES. Other encryption methods are nonstandard. There may be compatibility problems among different manufacturers.

Apply Cancel

Help

WEP Key: either ASCII (5-13 ASCII characters except / , and other illegal characters.) or Hex legal characters (10-26 Hex characters.)

WPA/WPA2-Personal: you can enable personal or mix mode, but you must make sure that the wireless client also supports the selected encryption method.

Internet 75%

start Wireless-N Broadban... Senza nome 1 - Open...

IT 23:33

